

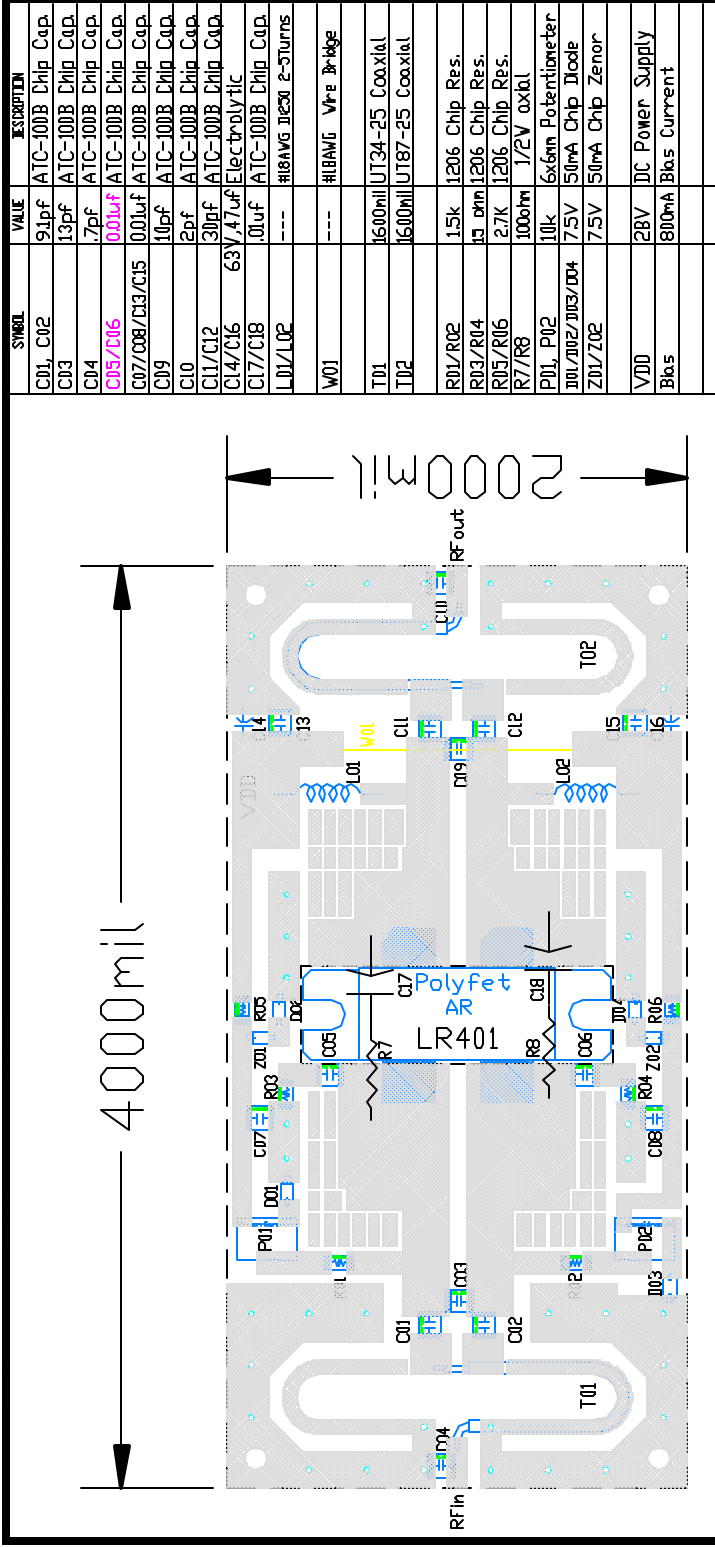
TB154
 Vds=28Vdc, Idq=800ma
 Freq = 500Mhz
 P1dB = 100 watts
 Saturated power=160W
 Refer to pcb layout for dimensions of Z1-Z4

DRN :	J Citrolo	10/19/00
CHK :	E. Greenbaum	10/24/00
ELECT :		
MECH :	K. S. Tay	10/19/00
PROC :		
QUAL :		
PGMS :		

Polyfet RF Devices

500MHz, 120W, 28V

Size	FSCM NO	Rev
TB 154		
Scale	Sheet	1 of 1



SYMBOL	VALUE	DESCRIPTION
C01, C02	9.1pf	ATC-100B Chip Cap.
C03	13pf	ATC-100B Chip Cap.
C04	.7pf	ATC-100B Chip Cap.
C05/C06	0.01uF	ATC-100B Chip Cap.
C07/C08/C13/C15	0.01uF	ATC-100B Chip Cap.
C09	10pf	ATC-100B Chip Cap.
C10	2pf	ATC-100B Chip Cap.
C11/C12	30pf	ATC-100B Chip Cap.
C14/C16	63/.47uF	Electrolytic
C17/C18	101uF	ATC-100B Chip Cap.
L01/L02	---	#18AVG JESD1 2-Turns
W01	---	#18AVG VPre Bridge
T01	16.00mil	UT34-25 Coaxial
T02	16.00mil	UT87-25 Coaxial
R01/R02	1.5k	1206 Chip Res.
R03/R04	10 ohm	1206 Chip Res.
R05/R06	2.7k	1206 Chip Res.
R7/R8	100ohm	1/2V 0x01
P01, P02	10k	6x6mm Potentiometer
D01/D02/D03/D04	7.5V	50mA Chip Diode
Z01/Z02	7.5V	50mA Chip Zenor
VDD	28V	DC Power Supply
Bias	800mA	Bias Current

PCB Material : Double Side Teflon
 ER=2.5, H=32, T=1.4

POLYFET RF DEVICES	
500Mhz, 28Vdc, 100W P1dB	
SIZE	F50M INI
REV	LR401
QUAL	A
SCALE	1 : 1
SHEET	1 OF 1

DRN	BY	J. Citrolo	10/18/06
CHKD			
ELECT			
MECH			
PROC			
QUAL			
PGMS			