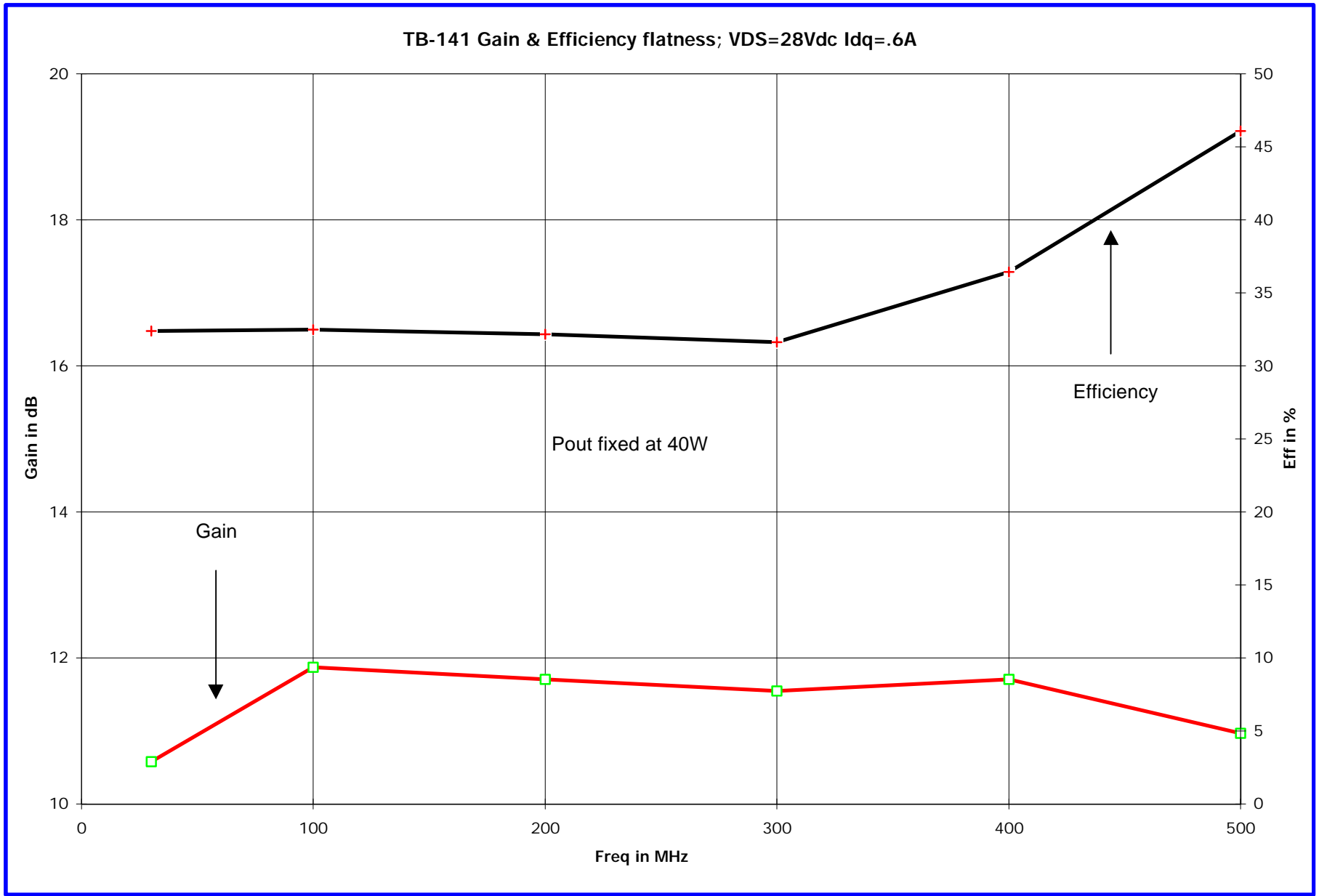
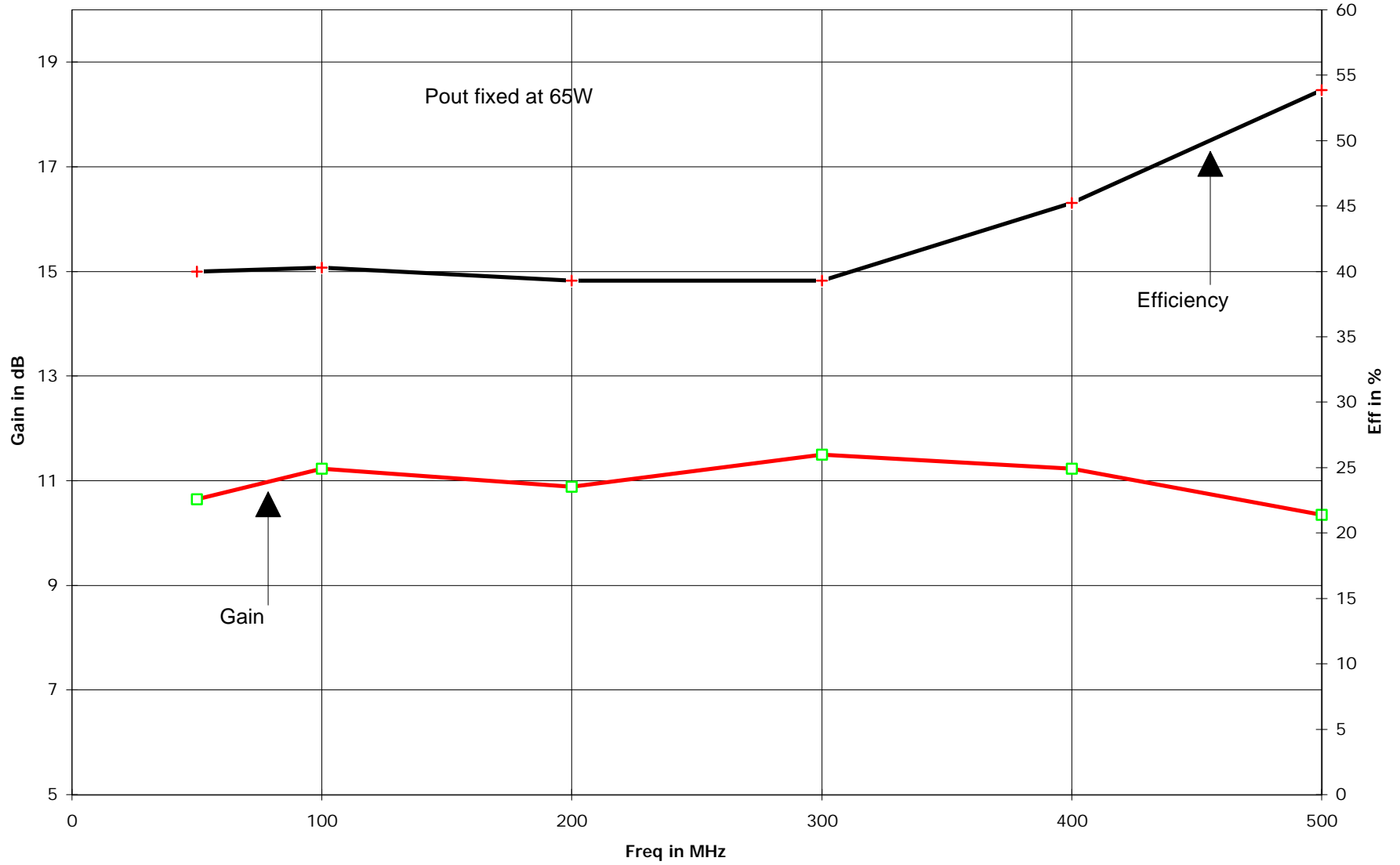
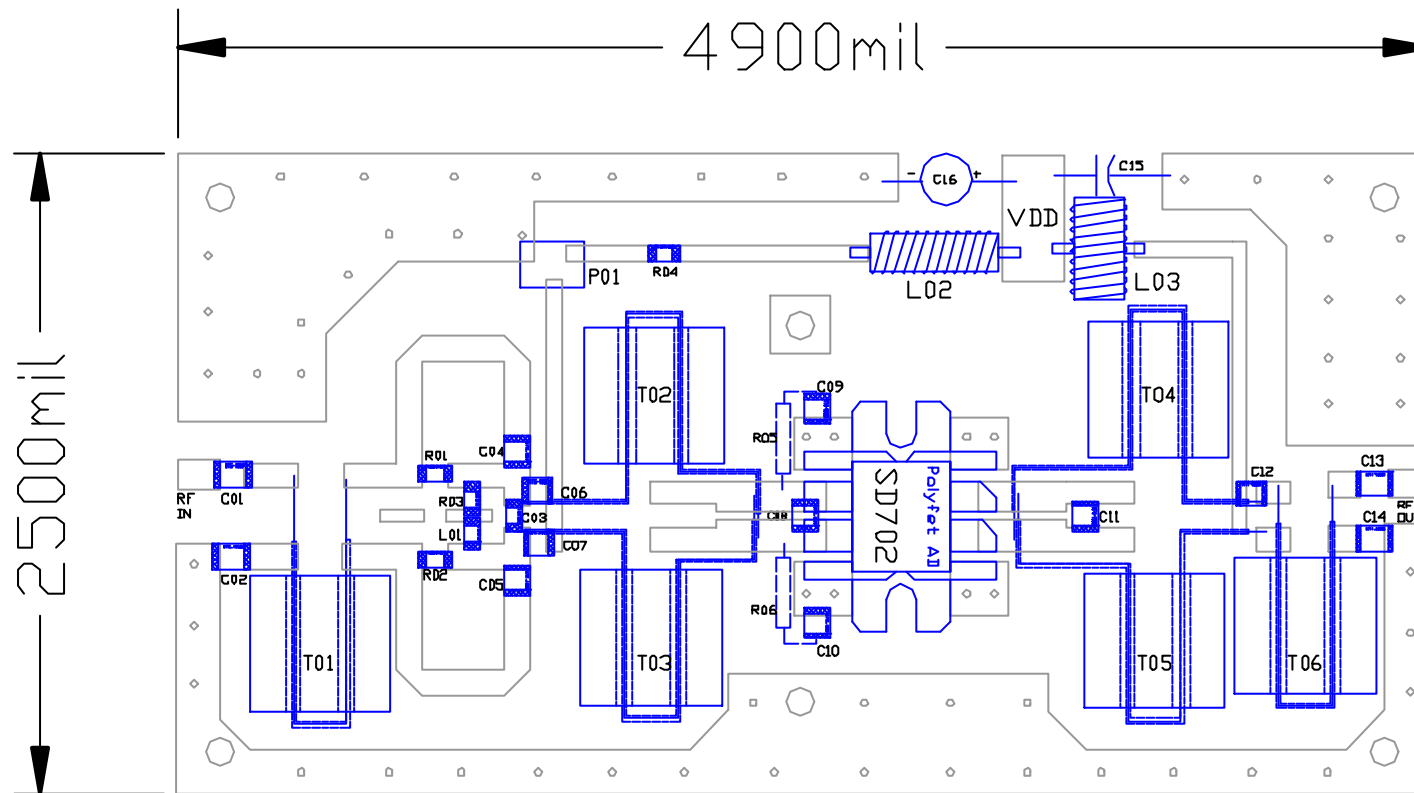


# Flatness Chart 1



TB-141 Gain & Efficiency flatness; VDS=28Vdc Idq=.6A





PCB Material: Double Side Teflon  
ER=2.5 H=31 T=0.7

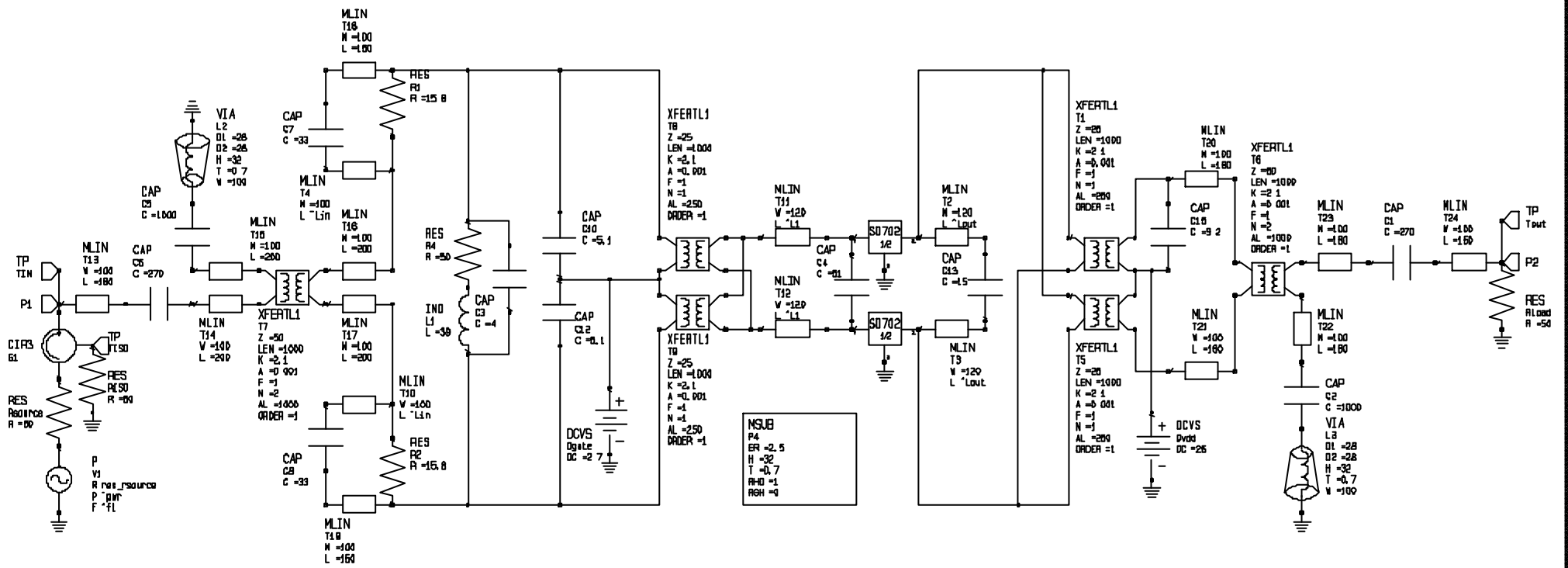
| SYMBOL          | VALUE  | DESCRIPTION                           |
|-----------------|--------|---------------------------------------|
| C01, C13        | 270pf  | ATC-100B                              |
| C02, C14        | 1000pf | ATC-100B                              |
| C03             | 4pf    | ATC-100B                              |
| C04, C05        | 33pf   | ATC-100B                              |
| C06, C07        | 5.1pf  | ATC-100B                              |
| C08             | 51pf   | ATC-100B                              |
| C09, C10        | 0.01uf | ATC-100B                              |
| C11             | 15pf   | ATC-100B                              |
| C12             | 9.2pf  | ATC-100B                              |
| C15             | 0.01uf | Tantalum Ele. Cap.                    |
| C16             | 47uf   | 50V Ele. Cap.                         |
| R01, R02        | 158ohm | 1206 Chip Res.                        |
| R03             | 50ohm  | 1206 Chip Res.                        |
| R04             | 5.6k   | 1206 Chip Res.                        |
| R05, R06        | 100ohm | 1/8W Metal Film Res.                  |
| P01             | 10k    | 7x7mm Potentioneter                   |
| L01             | 39rh   | 1210 Chip Incl.                       |
| L02             | ---    | #22AVG 10 Turn an 8ohm Res.           |
| L03             | ---    | #22AVG 10 Turn Wrapped Ferrite Toroid |
| T01, T06        | 50ohm  | Coaxial Transformer                   |
| T02,T03,T04,T05 | 25ohm  | Coaxial Transformer                   |
| VDD             | 28V    | DC Power Source                       |
| Idq             | 600mA  | Bias                                  |

|                  |          |
|------------------|----------|
| DRN BY: ZHOU JUN | 01/07/99 |
| CHKD :           |          |
| ELECT :          |          |
| MECH :           |          |
| PRIC :           |          |
| QUAL :           |          |
| PGMS :           |          |

POLYFET RF DEVICES  
30-500MHz Power Amplifier

|           |         |         |      |
|-----------|---------|---------|------|
| SIZE      | FSCM NO | TB141   | REV  |
| SCALE : 1 | : 1     | SHEET 1 | OF 2 |

| SYMBOL | VALUE | DESCRIPTION |
|--------|-------|-------------|
|--------|-------|-------------|



|                  |          |                           |              |
|------------------|----------|---------------------------|--------------|
| DRN BY: ZHOU JUN | 01/07/99 | POLYFET RF DEVICES        |              |
| CHKD :           |          | 30-500MHz Power Amplifier |              |
| ELECT :          |          | SIZE                      | FSCM NO      |
| MECH :           |          | TB141                     |              |
| PRDC :           |          | REV                       |              |
| QUAL :           |          |                           |              |
| PGMS :           |          | SCALE :                   | SHEET 2 OF 2 |